

## PR- Lady w/Lion Lamp -LF/RT

Catalog Numbe B-W-56659/56660

Item Number: 11247009



OH

Material

Color Multi-Colored

Dimensions 59W X 52D X 118H -EA

## Golden Acanthus Chandelier

Catalog Numbe DTL-07081370

Item Number: 10576003



OH 12

Material

Color Multi-Colored

Dimensions 33.5 DIA X 41.5 H

## Iron Street Lamp

Catalog Numbe CI3-T-5640

Item Number: 12002657



OH 2

Material CAST IRON

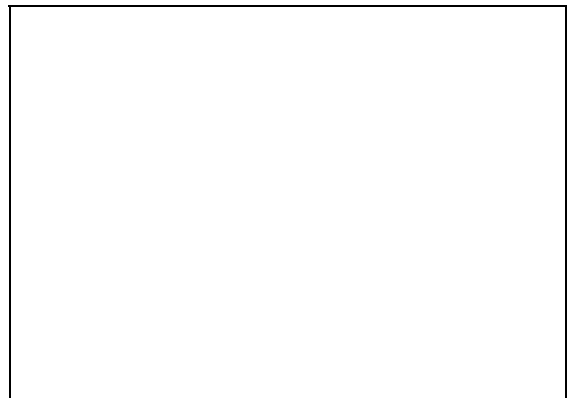
Color BLACK

Dimensions 165.25H

## Ebony Antler 8 Lgt Chandelier

Catalog Numbe DTL-1018B-8

Item Number: 12002128



OH

Material POLYRESIN

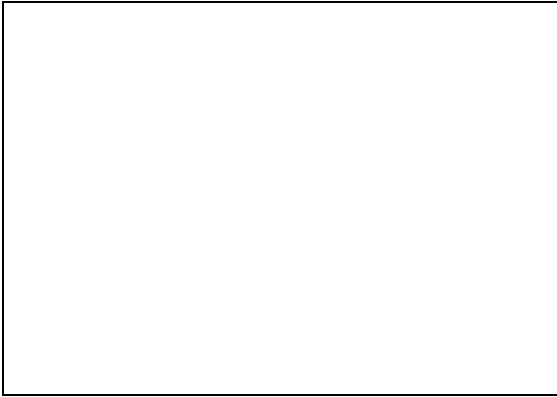
Color Multi-Colored

Dimensions 44 DIA X 27H

## White Tail Antler 15 Light Chandelier

Catalog Numbe DTL-1026A-15

Item Number: 12002127



OH

**Material** POLYRESIN  
**Color** Multi-Colored  
**Dimensions** 43.25 DIA X 29.5

## Regallo Grand Chandelier

Catalog Numbe DTL-12052537

Item Number: 11080827



OH 1

**Material**  
**Color** Multi-Colored  
**Dimensions** 71DIA X 63H

## Regallo Chandelier

Catalog Numbe DTL-12052534

Item Number: 11080819



OH 4

**Material** Metal  
**Color** Multi-Colored  
**Dimensions** 27.5 DIA X 23H

## Regallo Chandelier - 24 light

Catalog Numbe DTL-14040801

Item Number: 11198041



OH 2

**Material** Metal  
**Color** Multi-Colored  
**Dimensions** 47.25 DIA X 51.25H

### Pair- Lion Wall Lamps

Catalog Numbe DTL-14082905

Item Number: 11205394



OH

Material Metal

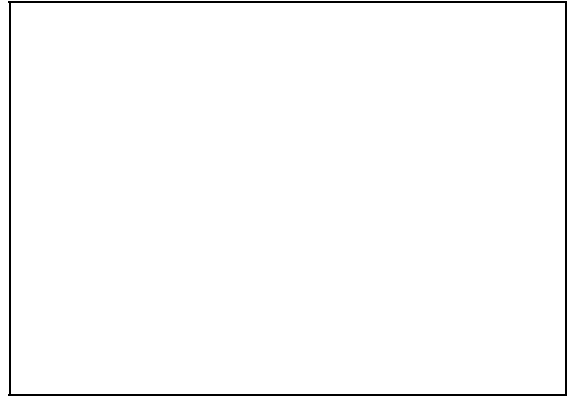
Color Multi-Colored

Dimensions 8 DIA X 25.5H - EACH

### Deer Head Sconce

Catalog Numbe DTL-16032608

Item Number: 12002125



OH 1

Material POLYRESIN

Color Multi-Colored

Dimensions 20W X 11D X 21H

### Pair- Horse Wall Lamps

Catalog Numbe DTL-14082911

Item Number: 11205415



OH 1

Material Metal

Color Multi-Colored

Dimensions 8 DIA X 25.5H - EACH

### Sorleona Chandelier

Catalog Numbe DTL-8111321

Item Number: 10729751



OH 8

Material

Color Multi-Colored

Dimensions 22 DIA X 25H

## Grand Echallen Chandelier

Catalog Numbe DTL-9112301

Item Number: 10848591



OH 7  
Material Metal  
Color Amber  
Dimensions 35 DIA X 45H

## Grand Milano Chandelier

Catalog Numbe DTL-9112329

Item Number: 10848620



OH 4  
Material  
Color Multi-Colored  
Dimensions 31 DIA X 43H

## Echallen Chandelier

Catalog Numbe DTL-9112302

Item Number: 10848603



OH 13  
Material  
Color Multi-Colored  
Dimensions 25 DIA X 34H

## Milano Chandelier

Catalog Numbe DTL-9112331

Item Number: 10848638



OH 4  
Material  
Color Multi-Colored  
Dimensions 25 DIA X 34H

### Gothic Wall Lighted Sconce

Catalog Numbe DTL-9113036  
Item Number: 10848646



OH 4  
Material Aluminum  
Color Bronze  
Dimensions 13L X 17D X 31H

### Church Street Grand Pendant

Catalog Numbe DYL-DY3846PE  
Item Number: 11239017



OH  
Material  
Color Multi-Colored  
Dimensions 38 DIA X 42H

### Gothic Column Lamp

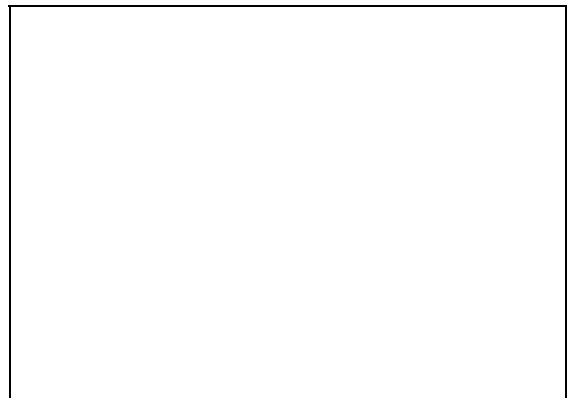
Catalog Numbe DTL-9113038  
Item Number: 10848662



OH  
Material Aluminum  
Color Bronze  
Dimensions 18 DIA X 50H

### Floral Pendant

Catalog Numbe DYL-TF0015-T046  
Item Number: 11269064



OH  
Material  
Color  
Dimensions 16 H

## Chantilly Grand Chandelier

Catalog Numbe L-DX-MGC2159-12

Item Number: 11079455



OH -1

Material

Color Multi-Colored

Dimensions 47 DIA X 59H

## Cortillion Chandelier

Catalog Numbe L-DX-MGC9041-12

Item Number: 10980874



OH 1

Material Metal

Color Multi-Colored

Dimensions 42 DIA X 47H

## Chantilly Chandelier

Catalog Numbe L-DX-MGC2159-8

Item Number: 11079447



OH

Material Crystal

Color Multi-Colored

Dimensions 31.5 DIA X 39H

## Riviera Chandelier

Catalog Numbe L-DX-MGC9164-10

Item Number: 10980823



OH

Material Metal

Color Multi-Colored

Dimensions 33.5 DIA X 41H

## Riviera Grand Chandelier

Catalog Numbe L-DX-MGC9164-35

Item Number: 10980840



OH

Material

Color Multi-Colored

Dimensions 55 DIA X 86.5H

## Reinosa Chandelier

Catalog Numbe L-DX-MGC9170-6+

Item Number: 10981025



OH 2

Material Metal

Color Multi-Colored

Dimensions 31 DIA X 38H

## Riviera Grand Chandelier -SIL

Catalog Numbe L-DX-MGC9164-35

Item Number: 11224481



OH

Material

Color Silver

Dimensions 55 DIA X 86.5H

## Island Iron Chandelier

Catalog Numbe L-DX-MGC9172-8+

Item Number: 10981009



OH 1

Material

Color Multi-Colored

Dimensions 43L X 15D X 29.5H

## Rosie O Grady Chandelier

Catalog Numbe L-DX-MGC9173-6+

Item Number: 10980989



OH

Material

Color Multi-Colored

Dimensions 41 DIA X 52H

## Valessimo Amber Chandelier

Catalog Numbe L-DX-MGC9505-8

Item Number: 10974722



OH 3

Material

Color Multi-Colored

Dimensions 29.5 DIA X 31.5H

## Maria Catyana Chandelier

Catalog Numbe L-DX-MGC9501-24

Item Number: 10980698



OH

Material

Color Multi-Colored

Dimensions 44.5 DIA X 38H

## Rosie OGradys Sconce

Catalog Numbe L-DX-MGW9173-2

Item Number: 11119082



OH 3

Material Metal

Color Multi-Colored

Dimensions 20W X 10D X 24H



## Grand Versailles Chandelier

Catalog Numbe L-DX-PLC9820-10

Item Number: 11191869



OH

Material

Color Multi-Colored

Dimensions 71 DIA X 59H

## Chandelier

Catalog Numbe L-DX-PLC9820-4+

Item Number: 11191826



OH -1

Material

Color Clear

Dimensions 32.5 DIA X 41.5H

## Chandelier

Catalog Numbe L-DX-PLC9820-4+

Item Number: 11191818



OH

Material Marble

Color Black

Dimensions 32.5 DIA X 41.5H

## Rectangular Crystal Chandelier

Catalog Numbe L-HY-001-10

Item Number: 11234355



OH

Material Glass

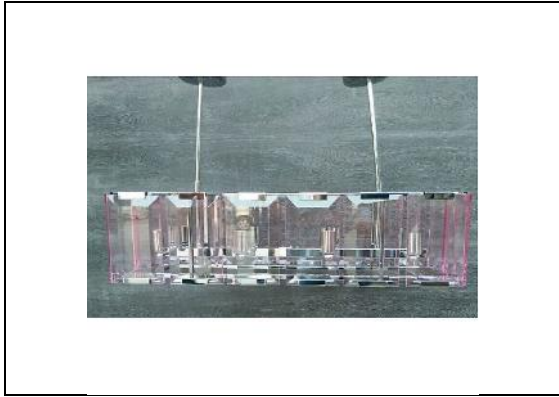
Color Multi-Colored

Dimensions 42W X 18.25D X 43H

## Radiant Champagne Chandelier

Catalog Numbe L-HY-004-8

Item Number: 11244326



OH 4

Material

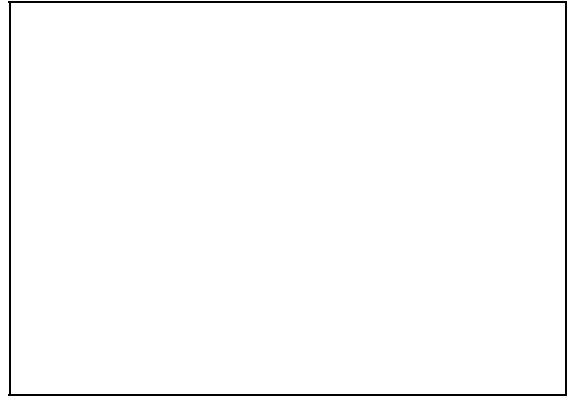
Color Multi-Colored

Dimensions 33L X 12D X 19.75H

## Sconce

Catalog Numbe L-HY-009

Item Number: 11252326



OH 2

Material

Color

Dimensions

## Cognac 3 Tier Chandelier

Catalog Numbe L-HY-008

Item Number: 11252318



OH

Material METAL

Color Multi-Colored

Dimensions 43 DIA X 52H

## Bronze Relana Chandelier

Catalog Numbe L-HY-2061

Item Number: 11159164



OH 1

Material METAL

Color Bronze

Dimensions 43 DIA X 79H

## Parisian Crystal Chandelier

Catalog Numbe L-HY-3022-25

Item Number: 11159201

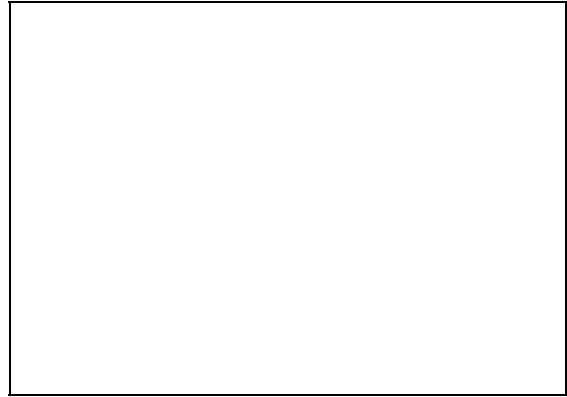


**OH** 2  
**Material** METAL  
**Color** Multi-Colored  
**Dimensions** 22 DIA X 25H

## Alonzo Brush Silver Chandelier

Catalog Numbe L-HY-3810-BS

Item Number: 11282437



**OH**  
**Material** Aluminum  
**Color** Silver  
**Dimensions** 39 DIA X 118H

## Alonzo Brushed Gold Chandelier

Catalog Numbe L-HY-3810

Item Number: 11147796



**OH** 2  
**Material** ALUMINUM  
**Color** Gold  
**Dimensions** 39 DIA X 118H

## Tangier Double Oval Chandelier

Catalog Numbe L-HY-3825

Item Number: 11147809



**OH**  
**Material** METAL  
**Color** Multi-Colored  
**Dimensions** 37 DIA X 28H

### Hollywood Brush Sil Chndlr -18

Catalog Numbe L-HY-5047-12+6

Item Number: 11195430

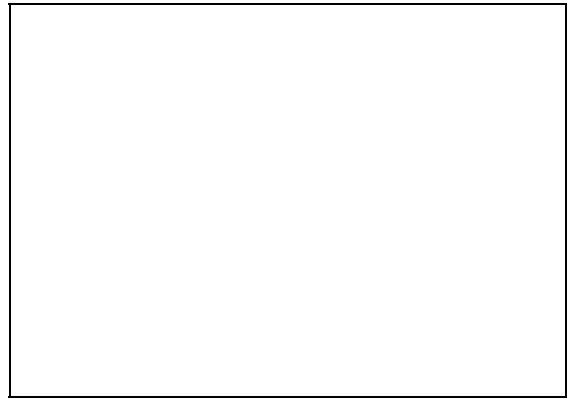


OH -1  
Material ALUMINUM  
Color Silver  
Dimensions 41 DIA X 37H

### Hollywood Brush Silver Chandelier- 9

Catalog Numbe L-HY-5047-6+3

Item Number: 11234304



OH -1  
Material ALUMINUM  
Color Silver  
Dimensions 31 DIA X 33H

### Hollywood Brush Sil Chndlr- 39

Catalog Numbe L-HY-5047-18+12

Item Number: 11234312



OH  
Material ALUMINUM  
Color Silver  
Dimensions 65 DIA X 98H

### Silver Chiffon Chandelier

Catalog Numbe L-HY-5051

Item Number: 11195499



OH 3  
Material ALUMINUM  
Color Silver  
Dimensions 41 DIA X 37H

## Brushed Gold Chandelier

Catalog Numbe L-HY-5056

Item Number: 11195501



OH

Material ALUMINUM

Color Gold

Dimensions 31 DIA X 25H

## The Matrix

Catalog Numbe L-HY-6010-L92

Item Number: 11260895



OH 14

Material METAL

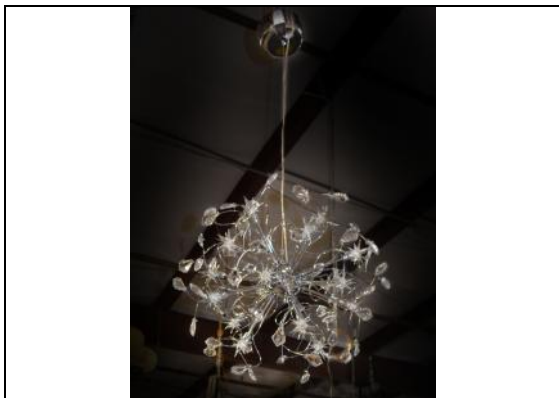
Color Multi-Colored

Dimensions 31 DIA X 31H

## Chandelier

Catalog Numbe L-HY-6004-18

Item Number: 11255501



OH 1

Material Glass

Color Multi-Colored

Dimensions

## Chandelier

Catalog Numbe L-HY-6011-24

Item Number: 11255519



OH 1

Material Glass

Color Multi-Colored

Dimensions

## Rivagio Chandelier

Catalog Numbe L-HY-62299D

Item Number: 11254313



**OH** 1  
**Material** Metal  
**Color** Multi-Colored  
**Dimensions** 31 DIA X 39H

## Versare Lamp

Catalog Numbe L-HY-62440T

Item Number: 11254284



**OH** 9  
**Material** METAL  
**Color** Multi-Colored  
**Dimensions** 14 DIA X 22H

## Grand Lobby Floor Lamp

Catalog Numbe L-HY-6242512L

Item Number: 11254372



**OH** 1  
**Material** METAL  
**Color** Multi-Colored  
**Dimensions** 45 DIA X 79H

## Baston Sconce

Catalog Numbe L-HY-62485B

Item Number: 11254321



**OH** 5  
**Material** METAL  
**Color** Multi-Colored  
**Dimensions** 6 DIA X 11H

## Baston Chandelier

Catalog Numbe L-HY-62485D

Item Number: 11254330



OH 1  
Material METAL  
Color Multi-Colored  
Dimensions 26 DIA X 18H

## Marseille Grand Chandelier

Catalog Numbe L-HY-904-16+8

Item Number: 11159172



OH  
Material Glass  
Color Clear  
Dimensions 50 DIA X 60H

## Marseille Crystal Chandelier

Catalog Numbe L-HY-904-10+5

Item Number: 11159181

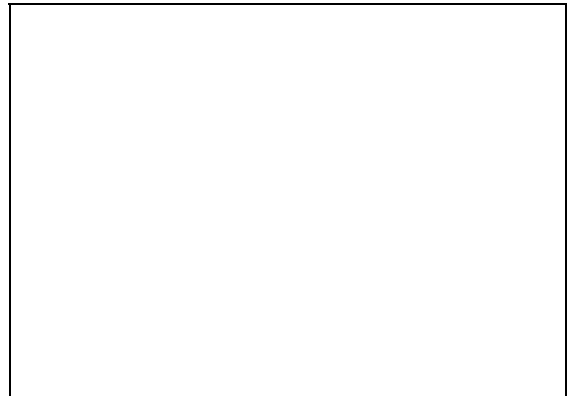


OH 2  
Material  
Color Clear  
Dimensions 36 DIA X 53H

## Chandelier

Catalog Numbe L-HY-A1-L07/10+

Item Number: 11277566

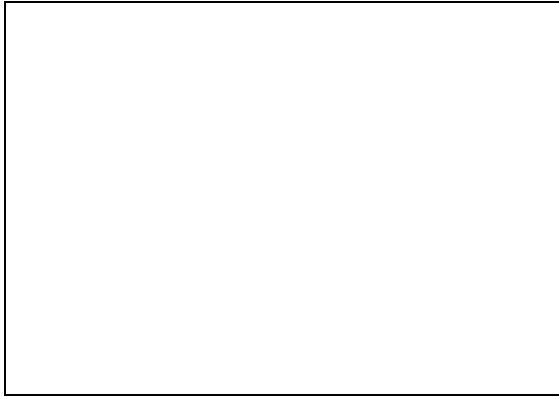


OH 1  
Material Metal  
Color Multi-Colored  
Dimensions 35 DIA X 69H

## Chandelier

**Catalog Numbe** L-HY-A1-L07/12+

**Item Number:** 11277574



**OH** 1  
**Material** Metal  
**Color** Multi-Colored  
**Dimensions** 47 DIA X 63H

## Crystal Arc Sconce

**Catalog Numbe** L-HY-HYCSL001

**Item Number:** 11229628



**OH** 9  
**Material** CRYSTAL  
**Color** Clear  
**Dimensions**

## Galaxy Chandelier

**Catalog Numbe** L-HY-AFD001

**Item Number:** 11195510



**OH**  
**Material** Metal  
**Color** Gold  
**Dimensions** 49 DIA X 28H

## Grand Regal Crystal Chandelier

**Catalog Numbe** L-HY-SJD051A

**Item Number:** 10861672



**OH** 2  
**Material** Metal  
**Color** Clear  
**Dimensions** 59 DIA X 71H



### Fine Crystal & Gold Chandelier

Catalog Numbe L-HY-SJD051B  
Item Number: 10861681



OH 3  
Material  
Color Clear  
Dimensions 32 DIA X 28H

### Golden Bell Crystal Chandelier

Catalog Numbe L-HY-SJD054C  
Item Number: 10861701



OH 2  
Material  
Color Clear  
Dimensions 39 DIA X 39H

### Regal Crystal Chandelier

Catalog Numbe L-HY-SJD053A  
Item Number: 10861699



OH 2  
Material Metal  
Color Clear  
Dimensions 47 DIA X 51H

### Gilt Crystal Chandelier Sconce

Catalog Numbe L-HY-WS100  
Item Number: 11175113



OH 7  
Material  
Color Clear  
Dimensions 20L X 10D X 33H

## Brushed Silver Crystal Sconce

Catalog Numbe L-HY-WS100-BS

Item Number: 11234321



**OH** 28  
**Material** Aluminum  
**Color** Silver  
**Dimensions** 20L X 10D X 31H

## Rectangulux Chandelier

Catalog Numbe L-KL-CK0037-18

Item Number: 11221239



**OH** 2  
**Material**  
**Color** Clear  
**Dimensions** 39.25L X 19.5DX35.5H

## Crystal Sconce

Catalog Numbe L-HYS070401B

Item Number: 11118995



**OH** 12  
**Material**  
**Color** Clear  
**Dimensions** 11 DIA X 16H

## Grand Crystal Column Chandelier

Catalog Numbe L-KL-CK0038-13

Item Number: 11221255



**OH** 4  
**Material** pine wood, forged iron  
**Color** Clear  
**Dimensions** 23.5 SQ X 101H

## Crystal Column Chandelier

Catalog Numbe L-KL-CK0038-4

Item Number: 11249899



**OH** 2  
**Material** stainless steel  
**Color** Clear  
**Dimensions** 16 SQ X 47.25H

## Amber Burst Chandelier

Catalog Numbe L-KL-GK999-6C-A

Item Number: 10567422



**OH**  
**Material**  
**Color** Amber  
**Dimensions** 35.5 DIA X 59H

## Multi XL Burst Chandelier

Catalog Numbe L-KL-GK999-120

Item Number: 11221757



**OH** 6  
**Material** steel crystal  
**Color** Multi-Colored  
**Dimensions** 47.25 DIA

## Amber / Red Burst Chandelier

Catalog Numbe L-KL-GK999-6C-A

Item Number: 11251091



**OH**  
**Material** steel  
**Color** Multi-Colored  
**Dimensions** 35.5 DIA X 41H

## Blue Burst Chandelier

Catalog Numbe L-KL-GK999-6C-B

Item Number: 11225926



OH

Material stainless steel

Color Blue

Dimensions 35.5 DIA X 41H

## Red Burst Chandelier

Catalog Numbe L-KL-GK999-6C-R

Item Number: 11225889



OH

Material Marble

Color Red

Dimensions 35.5 DIA X 41H

## Purple Burst Chandelier

Catalog Numbe L-KL-GK999-6C-P

Item Number: 11259712



OH 3

Material aluminiumáalloy

Color Purple

Dimensions 35.5 DIA X 41H

## White Burst Chandelier

Catalog Numbe L-KL-GK999-6C-W

Item Number: 11225918



OH 4

Material stainless steel

Color White

Dimensions 35.5 DIA X 41H

### Multi Burst Chandelier

Catalog Numbe L-KL-GK999-70  
Item Number: 11221749



**OH**  
**Material** Marble  
**Color** Multi-Colored  
**Dimensions** 27.5 DIA X 47.25H

### Purple/White Chandelier -Large

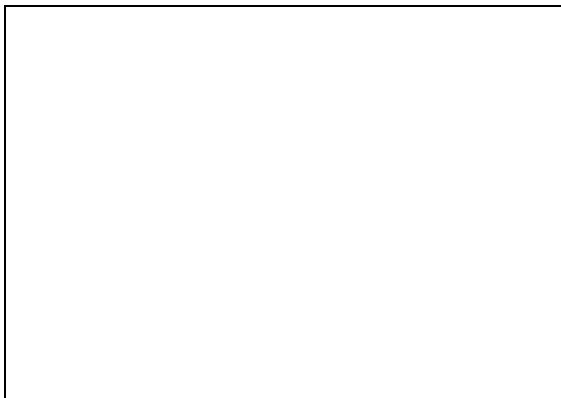
Catalog Numbe L-KL-GK999-PURP  
Item Number: 11279713



**OH** 7  
**Material**  
**Color**  
**Dimensions** 43 DIA X 59H

### Amber / White Burst Chandelier

Catalog Numbe L-KL-GK999-AMBE  
Item Number: 11281670



**OH** 1  
**Material** Metal  
**Color** Multi-Colored  
**Dimensions** 35.5 DIA X 41H

### Red Burst Chandelier -Large

Catalog Numbe L-KL-GK999-RED  
Item Number: 11171403



**OH** 2  
**Material** pine wood, copper  
**Color** Red  
**Dimensions** 43 DIA X 59H

## Frosted Blown Glass Chandelier

Catalog Numbe L-KL-GK999-WHIT

Item Number: 11225897



**OH** 15  
**Material** stainless steel  
**Color** White  
**Dimensions** 43 DIA X 59H

## Iron Chain Grand Chandelier

Catalog Numbe L-KL-KM011P-15

Item Number: 11276846

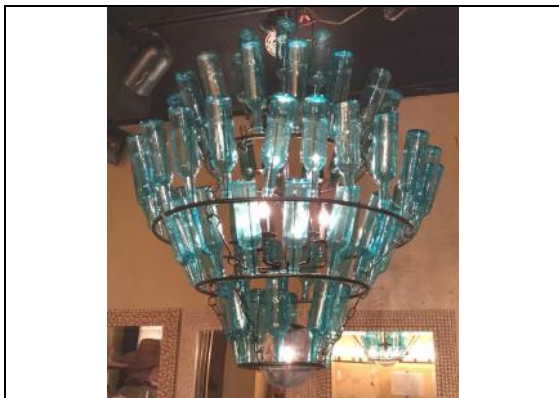


**OH**  
**Material** Iron  
**Color** Silver  
**Dimensions** 36 DIA X 46H

## Bottle Chandelier

Catalog Numbe L-KL-KG0071P-10

Item Number: 11249143



**OH** 2  
**Material**  
**Color** Blue  
**Dimensions** 39.25 DIA X 47.25H

## Iron Chain Pendant Lamp

Catalog Numbe L-KL-KM0140P-9

Item Number: 11264861

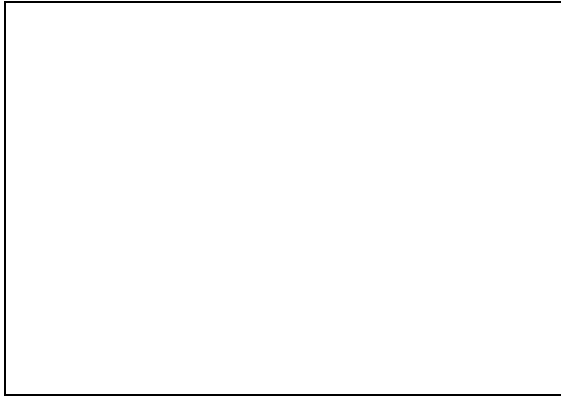


**OH** 2  
**Material** Metal  
**Color** Silver  
**Dimensions** 25 DIA X 39H

## Antler Chandelier

Catalog Numbe L-KL-KM0261P-6

Item Number: 11276811



**OH** 2  
**Material** Resin  
**Color** Brown  
**Dimensions** 36 DIA X 24H

## Steel City Hanging Light

Catalog Numbe L-KL-KM031-3

Item Number: 11079842



**OH**  
**Material** PS  
**Color** Silver  
**Dimensions** 60L X 15D X 56H

## Antler Wall Sconce

Catalog Numbe L-KL-KM0261W-2

Item Number: 11276820



**OH** 4  
**Material** Resin  
**Color** Brown  
**Dimensions** 15W X 5.25D X 19H

## Eastern Night Oval Pendant

Catalog Numbe L-KL-KM0386P-1B

Item Number: 11249135

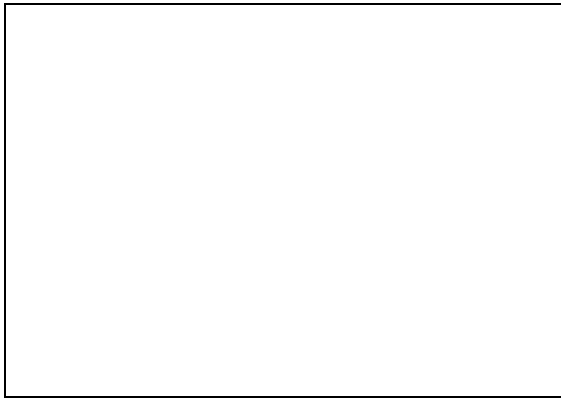


**OH**  
**Material** pine wood, fabric  
**Color** Clear  
**Dimensions** 12 DIA X 24H

## Eastern Night Chandelier

Catalog Numbe L-KL-KR0107P-S

Item Number: 11264802



OH

Material Glass

Color Multi-Colored

Dimensions 18 DIA X 38.5H

## Sheer Luxe Double Chandelier

Catalog Numbe L-KL-KR100-2

Item Number: 10660281



OH 1

Material

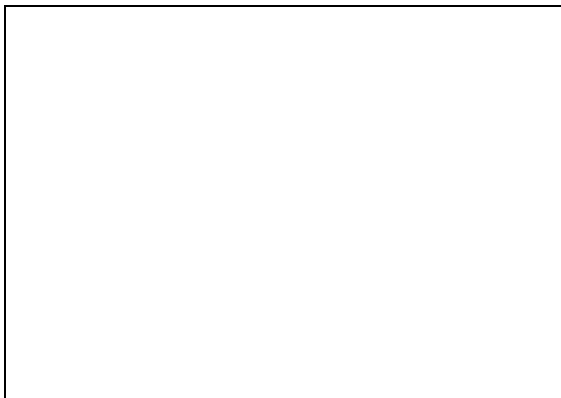
Color Silver

Dimensions 39L X 18D X 14H

## Eastern Night Globe

Catalog Numbe L-KL-KR0108P-3

Item Number: 11264811



OH 1

Material Metal

Color Multi-Colored

Dimensions 16 DIA X 25H

## Crystalletto Drop Chandelier

Catalog Numbe L-KL-KR1065

Item Number: 10761233



OH

Material

Color Multi-Colored

Dimensions 13 DIA X 17H



### Crystalletto Chandelier

Catalog Numbe L-KL-KR1065-5

Item Number: 10734024



OH 3

Material

Color Clear

Dimensions 27.5 DIA X 98.5H

### Crystal Orb Basket Chandelier

Catalog Numbe L-KL-KR155

Item Number: 10790245



OH

Material

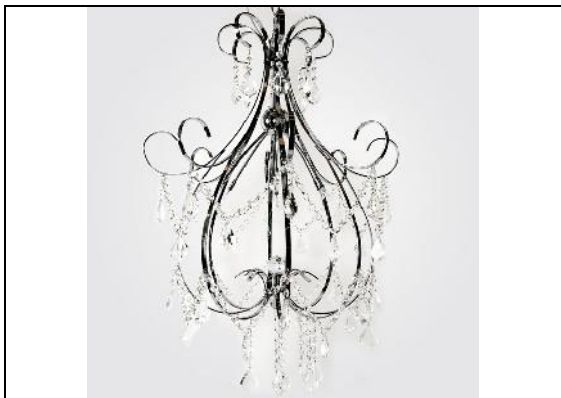
Color Multi-Colored

Dimensions 20L X 20D X 31.5H

### Crystalette Chandelier

Catalog Numbe L-KL-KR1372

Item Number: 10777016



OH 6

Material

Color Clear

Dimensions 19.5 DIA X 31.5H

### Crystal Aura Chandelier

Catalog Numbe L-KL-KR210

Item Number: 10733890



OH

Material

Color Multi-Colored

Dimensions 39 DIA

## Casa Blanca Chandelier

Catalog Numbe L-KL-KW0020P-9

Item Number: 11249119



OH 2

Material

Color Multi-Colored

Dimensions 43 DIA X 35.5H

## Edison Rope Wheel - 8 Light

Catalog Numbe L-KL-KW0041P-8

Item Number: 11249080



OH

Material

Color Multi-Colored

Dimensions 31.5 DIA X 23.5H

## Edison Rope - 16 Light

Catalog Numbe L-KL-KW0041P-16

Item Number: 11249098



OH

Material pine wood, glass

Color Multi-Colored

Dimensions 49L X 16D X 31H

## Bicycle Chandelier

Catalog Numbe L-KL-KW0057P-6

Item Number: 11249101



OH 1

Material

Color Multi-Colored

Dimensions 27 DIA X 35.5H

### French Silver Chandelier-15LED

Catalog Numbe L-ZGL-P9125/10+

Item Number: 11258103



**OH** 2  
**Material** Aluminum  
**Color** Silver  
**Dimensions** 39 DIA X 26H

### French Silver Chandelier-8 LED

Catalog Numbe L-ZGL-P9125/8

Item Number: 11258091



**OH**  
**Material** Aluminum  
**Color** Silver  
**Dimensions** 33 DIA X 26H

### French Silver Chandelier-20LED

Catalog Numbe L-ZGL-P9125/5+1

Item Number: 11258111



**OH**  
**Material** Aluminum  
**Color** Silver  
**Dimensions** 39 DIA X 83H

### Chandelier - Antque Brz Finish

Catalog Numbe L-ZGL-P9149/10

Item Number: 11258066



**OH**  
**Material** Aluminum  
**Color** Bronze  
**Dimensions**

### Bronze Gold LED Chandelier -18

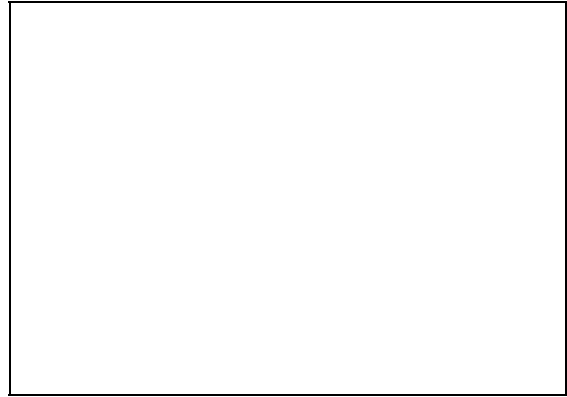
Catalog Numbe L-ZGL-P9214/12+  
Item Number: 11258154



**OH** 1  
**Material** Aluminum  
**Color** Gold  
**Dimensions** 45 DIA X 41 H

### 4 Tier - 24K Gold Chandelier

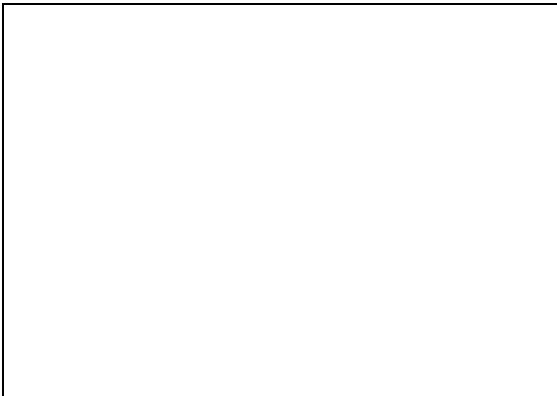
Catalog Numbe L-ZGL-P9216-24K  
Item Number: 11276926



**OH**  
**Material** Metal  
**Color** Gold  
**Dimensions** 27.5 DIA X 81H

### Argent 4 Tier Silver Chandelier

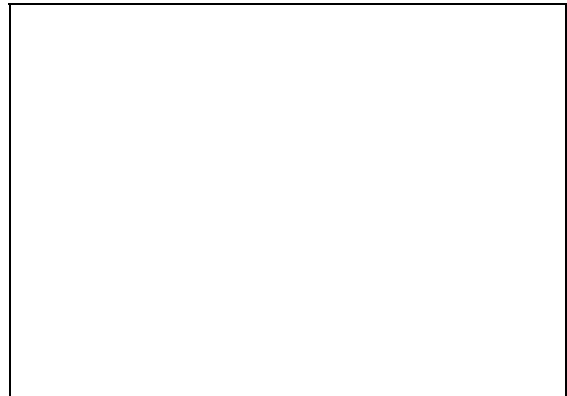
Catalog Numbe L-ZGL-P9216  
Item Number: 11276918



**OH** 1  
**Material** Aluminum  
**Color** Silver  
**Dimensions** 27.5 DIA X 81H

### Chandelier - 24K Gold Finish

Catalog Numbe L-ZGL-P9216/8-2  
Item Number: 11276900



**OH**  
**Material** Metal  
**Color** Gold  
**Dimensions** 33.5 DIA X 27H

### French Silver Sconce - 1 LED

Catalog Numbe L-ZGL-W9125/1

Item Number: 11258120



**OH** 4  
**Material** Aluminum  
**Color** Silver  
**Dimensions** 17W X 7D X 13.75H

### French Silver Sconce - 3 LED

Catalog Numbe L-ZGL-W9125/3

Item Number: 11259026



**OH** 2  
**Material** Aluminum  
**Color** Silver  
**Dimensions** 17W X 15.75D X 19.5H

### Sconce - French Bright Silver

Catalog Numbe L-ZGL-W9125/2

Item Number: 11259042



**OH**  
**Material** Aluminum  
**Color** Silver  
**Dimensions** 17W X 15D X 14H

### Spanish Alabaster Sconce

Catalog Numbe LB-LB4014-B-04

Item Number: 10524748



**OH**  
**Material** Alabaster  
**Color** Multi-Colored  
**Dimensions** 16W X 16D X 19H

## Alabaster Double Sconce

Catalog Numbe LB-LB4086-B-04

Item Number: 10524756



OH

**Material** Alabaster  
**Color** Multi-Colored  
**Dimensions** 16 W X 16D X 21H

## Spanish Alabaster Chndlr(52in)

Catalog Numbe LB-LB6168-B-04

Item Number: 10524844



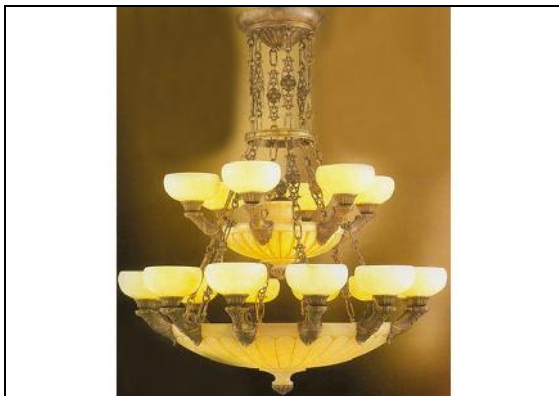
OH

**Material** Alabaster  
**Color** Multi-Colored  
**Dimensions** 47 DIA X 52 H

## Two Tier Alabaster Chandelier

Catalog Numbe LB-LB6081-B-04

Item Number: 10524836



OH

**Material** Bronze  
**Color** Multi-Colored  
**Dimensions** 44 DIA X 47 H

## Palatial Alabaster Chandelier

Catalog Numbe LB-LB6301-B-04

Item Number: 10524633



OH

**Material** Alabaster  
**Color** Multi-Colored  
**Dimensions** 75 DIA X 104 H

## Grand Alabaster Chandelier

Catalog Numbe LB-LB6304-B-04

Item Number: 10524641



OH

**Material**

**Color** Bronze

**Dimensions** 67 DIA X 87 H

## Crystal Three Tier Chandelier

Catalog Numbe LB-LB9102

Item Number: 10433491



OH

**Material** Metal

**Color** Clear

**Dimensions** 41.25 DIA X 57H

## Crystal & Gold Dore Chandelier

Catalog Numbe LB-LB9043

Item Number: 10433467



OH 1

**Material** Metal

**Color** Gold

**Dimensions** 41.5 DIA X 59H

## Spanish Alabaster Chandelier

Catalog Numbe LB-LBB2-B-04

Item Number: 10524692



OH

**Material** Alabaster

**Color** Multi-Colored

**Dimensions** 59 DIA X 99 H

### Jolie Soir Pendant

Catalog Numbe SAC-CL1140-1S

Item Number: 10667562



OH 2

Material

Color Multi-Colored

Dimensions 12 DIA X 34H

### Florence Mirrored Wall Sconce

Catalog Numbe SAC-GW322-5226

Item Number: 11137694



OH 5

Material

Color Gold

Dimensions 26L X 10D X 62H

### Palatial Mirrored Wall Sconce

Catalog Numbe SAC-GW165-5929

Item Number: 11137686



OH 5

Material

Color Multi-Colored

Dimensions 36L X 10D X 59H

### Botanical 12 Light Chandelier

Catalog Numbe WJL-WJ8011P-12

Item Number: 11254381



OH 5

Material Metal

Color Multi-Colored

Dimensions 39 W X 14D X 47H



## Botanical 9 Light Chandelier

Catalog Numbe WJL-WJ8011P-9

Item Number: 11254399



OH 2

Material

Color Multi-Colored

Dimensions

## Mini Gold Dancer 8 Chandelier

Catalog Numbe WJL-WJ8018P-8

Item Number: 11254410



OH 3

Material Metal

Color Multi-Colored

Dimensions 32W X 16D X 47H

## Mini Gold Dancer 7 Chandelier

Catalog Numbe WJL-WJ8018P-6+1

Item Number: 11254428



OH 4

Material Metal

Color Multi-Colored

Dimensions 24 DIA X 35H